



SYSTEM OVERVIEW

- Approximately 350 miles of natural gas gathering
- Approximately 5 miles of natural gas transmission
- Total mileage is 355 miles
- 25,000 horsepower of compression
- Gas dehydration and CO2 removal
- Multiple interconnect options
- Centralized facility located near Longstreet, LA
- Gas delivered to various delivery points in East Texas and LA

WHAT ARE THE SIGNS OF A NATURAL GAS PIPELINE LEAK?

- Blowing or hissing sound
- Dust blowing from a hole in the ground
- Continuous bubbling in wet or flooded areas
- Gaseous or hydrocarbon odor
- Dead or discolored vegetation in a green area
- Flames, if a leak has ignited

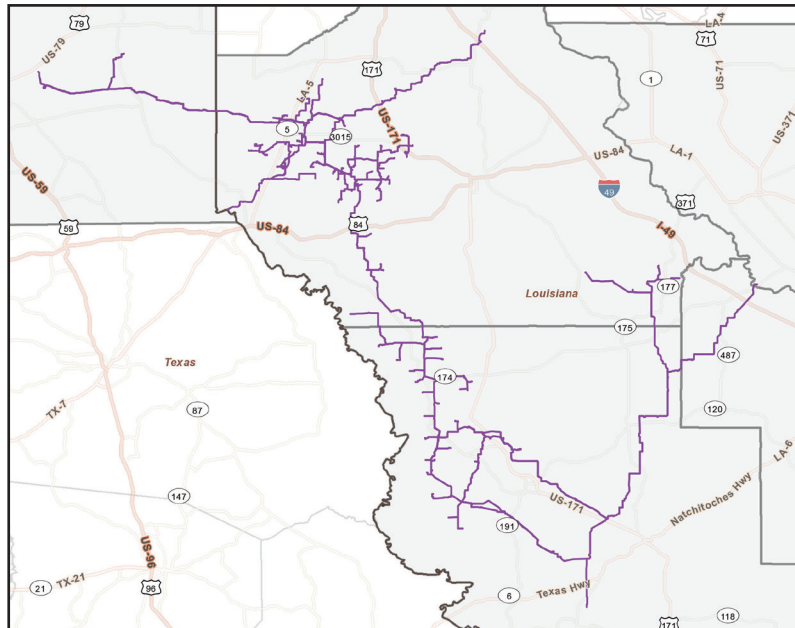
WHAT SHOULD I DO IF I SUSPECT A PIPELINE LEAK?

Your personal safety should be your first concern:

- Evacuate the area and prevent anyone from entering
- Abandon any equipment being used near the area
- Avoid any open flames
- Avoid introducing any sources of ignition to the area (such as cell phones, pagers, 2-way radios)
- Do not start/turn off motor vehicles/ electrical equipment
- Call 911 or contact local fire or law enforcement
- Notify the pipeline company
- Do not attempt to extinguish a natural gas fire
- Do not attempt to operate any pipeline valves

PIPELINE SAFETY

System failures occur infrequently along the nation's network of interstate natural gas pipeline facilities, and many of these



EMERGENCY CONTACT:
1-877-697-2028

PRODUCTS/DOT GUIDEBOOK ID#/GUIDE#:

Natural Gas	1971	115
-------------	------	-----

LOUISIANA PARISHES OF OPERATION:

Beauregard	Red River
DeSoto	Sabine
Natchitoches	Vernon

TEXAS COUNTIES OF OPERATION:

Panola

Changes may occur. Contact the operator to discuss their pipeline systems and areas of operation.

are caused by damage from others digging near the pipeline. We watch for unauthorized digging, but we request your help to notify us.

ALWAYS CALL 811 BEFORE YOU DIG!

PIPELINE LOCATION AND MARKERS

Pipeline markers are used to indicate the approximate location of a natural gas pipeline and to provide contact information. Aerial patrol planes also use the markers to identify the pipeline route. Markers should never be removed or relocated by anyone other than a pipeline operator.

You can also find out where other companies' pipelines are in your area by going to the National Pipeline Mapping System website at www.npms.phmsa.dot.gov.

EMERGENCY RESPONSE PLANS

Emergency Response Plans are developed for pipeline facilities to contain, control and mitigate the various types of emergency conditions/situations that could occur at one of our facilities. For more information regarding DTM Louisiana Gathering, LLC emergency response plans and procedures, contact us directly at 304-712-1758.